

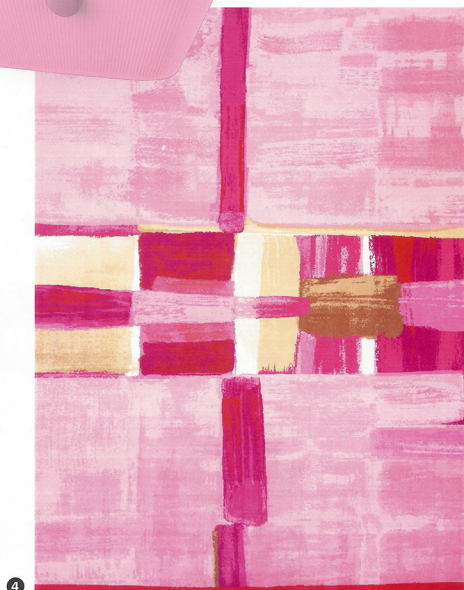
# HOMES

*The insider's guide to luxurious living*

## EVERYTHING'S ROSY

*This season's hottest colour trend will have you tickled pink. Mix it up with items in shades ranging from soft blush to statement-making magenta*

CURATED BY TAMSIN BRADSHAW



1. Fork and knife, ERCUIS. AVAILABLE AT HEATHER & MARCH
2. 50s Style dishwasher, SMEG
3. PetNio travel organiser for pets by Miriam Mirri, ALESSI
4. Pink carpet, FORT STREET STUDIO
5. Madame - World of Emilio Pucci chair by Philippe Starck, KARTELL
6. Rocaille Rose poudré plate, GIEN. HEATHER & MARCH



## *New Flame*

New to Christofle's Jardin d'Eden product family is the table candelabra. Available in three- and five-candle versions, this 40cm-high candelabra beautifully embodies the sweeping curves and complex etching work for which Jardin d'Eden is recognised. Dutch designer Marcel Wanders is behind the collection, which references the Garden of Eden and the seven deadly sins via leaves, fleurs-de-lis and apples atop a geometric matrix. Also in the range are flatware, trays, centrepieces and much more. [christofle.com](http://christofle.com)



## ALADDIN'S CAVE

Create a striking effect underfoot with Fort Street Studio's beautiful Cavern carpet. The 120-knot carpet is painstakingly handwoven using wild Dandong silk and age-old crafting techniques. Harvested from silkworms that eat wild oak leaves from forests in northern China, the silk that Fort Street Studio works with results in a lush, cashmere-like feel. It also allows for subtle colourways such as Deep (pictured here). Visit Fort Street Studio's One Island South showroom to explore the brand's full offerings. [fortstreetstudio.com](http://fortstreetstudio.com)