

# Galerie

## Live Artfully

INFLUENTIAL INTERIORS FROM  
AROUND THE WORLD

SAVVY COLLECTORS OPEN THEIR DOORS

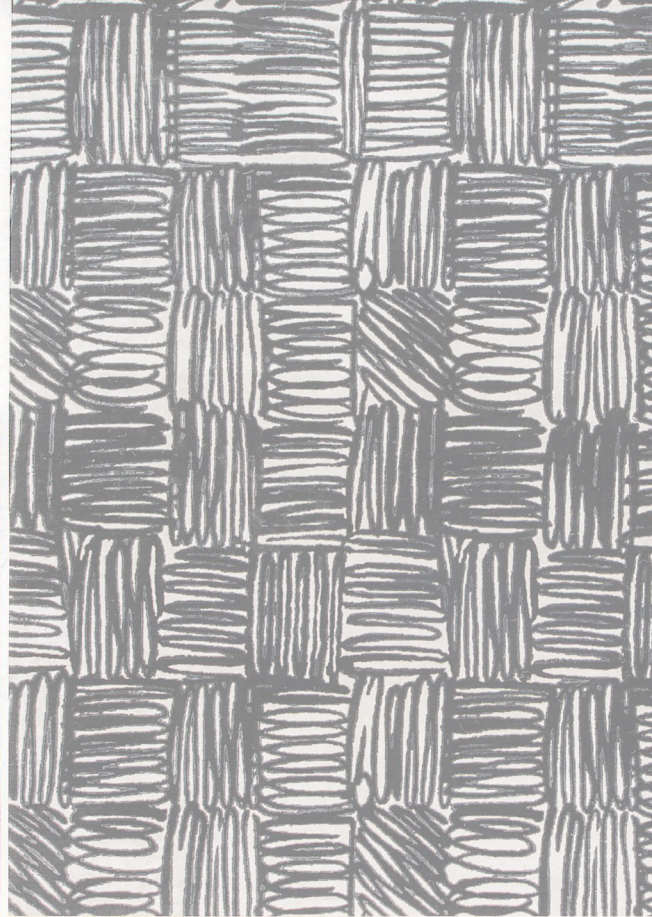
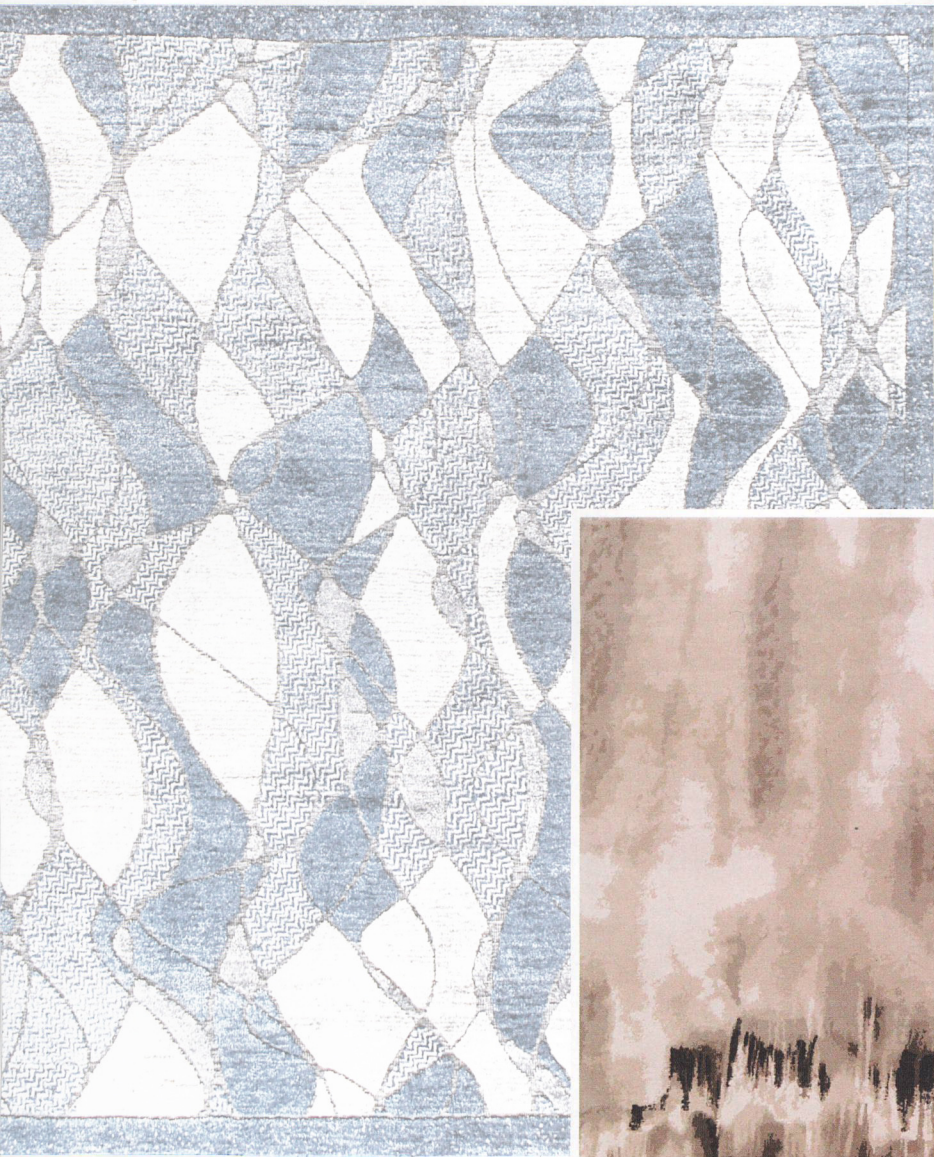
DAVID ADJAYE DESIGNS FOR  
LORNA SIMPSON

PLUS, SPECIAL  
VENICE BIENNALE PREVIEW



# SHOPPING

**Right:** Doris Leslie Blau's Contemporary Rug N11406, of wool and silk; [dorisleslieblau.com](http://dorisleslieblau.com).  
**Opposite:** Decorator Jamie Drake offset a sitting area's understated furnishings with the Bedros wool-and-silk rug, an Alpha Workshops design for Edward Fields; [edwardfields.com](http://edwardfields.com).



**Above:** Riptide Ice from the Sapphire collection by Stark, of wool and silk; [starkcarpet.com](http://starkcarpet.com). **Right:** Fort Street Studio's watercolor-inspired Desu Light, of wild silk; [fortstreetstudio.com](http://fortstreetstudio.com). All except Fort Street Studio available to the trade only.

—JACQUELINE TERREBONNE

